

AT15 Fuel dispenser 40÷180 l/min for fleets or for unattended systems

DESCRIPTION

Dispenser with flow rate from 40 to 180 l/min, single or alternating version. Available for fleet or retail station.

Direct connection to the probe for measuring the level of diesel, water, temperature and density, with visualization directly on the display of the dispenser of the height of the product present in the tank.

Possibility to install an integrated management system for enabling deliveries with data download via LAN, WiFi or GPRS modem.

Designed for dispensing unleaded petrol up to 50 l/min and diesel up to 180 l/min.

A vapour recovery system is available for use with petrol.

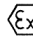
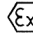
The AT15 dispenser is an apparatus of the IIA group suitable for use in areas classified with the presence of flammable gases (Zone 1, category 2G or zone 2, category 3G). It is designed and built according to the ATEX directive 2014/34 / EU, according to the standard: EN13617-1.

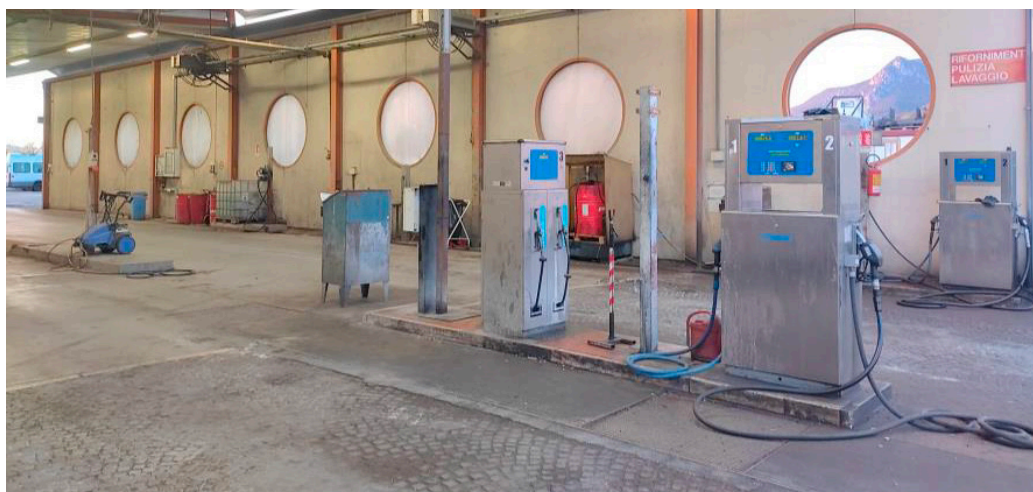
MAIN CHARACTERISTICS

- Dispenser for fleet or unattended system
- Flow rate 40 ÷ 180 l/min
- Accuracy $\pm 0,5\%$ MID



TECHNICAL CHARACTERISTICS

Housing	Stainless steel
Flexible hose	Light version, section according the flow rate
Nozzle	Automatic type, ATEX certificate
Computing head	LCD display 6 digit 1" high, LED backlighting
Pump	OIML-approved monoblock with check valve
Filter	Stainless steel, 100 µm, reusable
Meter	± 0,5% (MID Compliant)
Motor	Ex-proof, three phase 1/2,2 kW (120 l/min), 2 X2,2 kW (180 l/min)
Flow rate	40 ÷ 180 l/min
Vapor Recovery (VRS)	Electronic with variable speed pump VRP21 series
Monitoring VRS	Available on request
Ambient temperature	-25°C ÷ +55°C (heating system for temperature less than -10 °C)
Dimensions (LXPXH)	950X448X1750 mm
Marking	CE-M EU Type Approval No. T10820 (MID 2014/32/UE) CE  II 2G Ex IIA T3 Gb (ATEX 2014/34/UE) (Petrol) CE  II 3G Ex IIA T3 Gc (ATEX 2014/34/UE) (Diesel)



Example of installation

MAIN CONFIGURATIONS

CODE	FLOW RATE	PRODUCT	HYDRAULIC	VERSION	DISPLAY*
AT15A273GGBVM	70/80 l/min	Diesel	Double	Two-sides	Volumetric
AT15A274GGBVM	70/120 l/min	Diesel	Double	Two-sides	Volumetric
AT15A222BGBVM	40/40 l/min	Petrol/Diesel	Double	Two-sides	Volumetric
AT15A227BGBVM	40/70 l/min	Petrol/Diesel	Double	Two-sides	Volumetric
AT15A223BGBVM	40/80 l/min	Petrol/Diesel	Double	Two-sides	Volumetric
AT15A222BBBVM	40/40 l/min	Petrol/Diesel	Double	Two-sides	Volumetric

* also available in comptometric version

Specifica soggetta a modifiche senza preavviso